

Exhaust air unit RA15-60

Description

- Highly efficient radial fan for horizontal installation in the outer wall
- Installation in separately available round duct (Ø 160 mm)
- Contains an EC motor, damping rings, star-shaped silencers and washable G2 filter
- Control via universal control unit 5/UNI

Order No. 039 996

Installation

The built-in device is inserted into the wall-tube 9/R 160 (Ø 162 mm) and with a slight incline outwards into the outer wall.

The power supply is provided via the universal control 5/UNI-FT, which is powered by a power supply unit. The exhaust air fan is operated via the series switch 5/W2U.

Optionally, it can be connected via 5/UNI-FT to the comfort control TAC. Please contact our Technical Customer Service for further information.

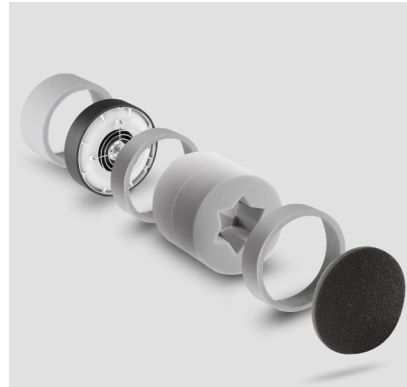
Please observe the installation manual and have the electrical connection of the fan performed by a qualified professional.

Technical data

Volume flow	15 - 60 m ³ /h
	4 - 17 l/s
Equivilant free area EN13141-1	4000mm
Sound pressure level at 1 m distance	16 - 37 dB(A)
Sound pressure level at 3 m distance	6 - 27 dB(A)
Measuring surface sound pressure level	14 dB(A)
Sound power level L _w	24 - 45 dB(A)
Power consumption	0,6 - 7,2 W
Supply voltage	12 V DC SELV
Core drilling	162 mm
Minimum installation length	180 mm
Dimensions	Ø 154 x 147mm
Protection class	IP22

Note

Products and illustrations may vary slightly. Due to continuous product development and/or several suppliers e.g. for raw materials, colours, among other things, may vary slightly (not for visible parts) or be shown differently in brochures.



E249 02.20