

### Description

- Control unit for the devices e<sup>2</sup> and e<sup>90</sup>, as well as for the exhaust fan RA 15-60 including control panel
- Equipped with humidity and temperature sensor

Order No. 040 113

### Installation

The operating element, the control unit and the corresponding power supply unit for voltage supply are required for operation. While the operating element and the control unit are included together in the delivery, one of the three power supply units (18, 60 or 100 Watt) available from LUNOS can be selected separately as required.

Each control unit can control 10 e<sup>2</sup>, 5 e<sup>90</sup> (depends on power supply unit) or one RA 15-60.

If the 18 Watt power supply is selected, it can be installed in a 90 mm deep switch box. The 60 and 100 watt power supply units are installed on the top-hat rail. The recommended installation height for convenient operation is approx. 1.50 m from the finished floor (OFF).

Please observe the installation manual and have the electrical connection of the

### Technical data

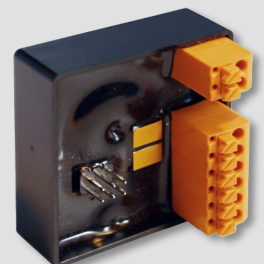
Input and output voltage	12 V DC
Functional voltage	0 - 10 V
Operational switching current	max. 5 A
Connected load	max. 60 W
Dimensions of the operating element W x H x D	88 x 88 x 11 mm
Dimensions of the control unit W x H x D	42 x 42 x 26 mm

### Power supply units

Input voltage	100 - 240 V AC	
Output voltage	12 V DC	
<b>Type</b>	<b>Power</b>	<b>Order No.</b>
5/NT18	18 Watt	039 973
5/NT60	60 Watt	039 974
5/NT100	100 Watt	040 096

### Note

Products and illustrations may be subject to slight variation. Due to continuous product development and/or several suppliers e.g. for raw materials, colours, among other things, may vary slightly (not for visible parts) or be shown differently in brochures.



E300 02.20