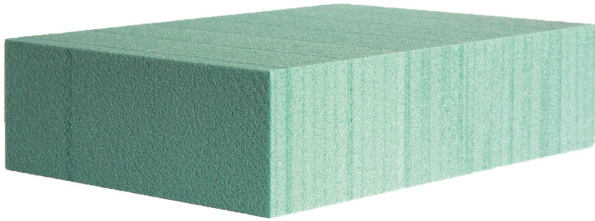


Technical Data

Properties	Panel Density				Unit	Standard
	115		180			
Compressive strength (perpendicular ¹⁾ / parallel ²⁾ to plane)	¹⁾ 1,5	²⁾ 0,8	¹⁾ 3,2	²⁾ 2,1	N/mm ²	EN 826
E-Modulus compression (perpendicular ¹⁾ / parallel ²⁾ to plane)	¹⁾ 67	²⁾ 45	¹⁾ 118	²⁾ 106	N/mm ²	EN 826
Bending strength (t=15 mm, welding lines lengthwise)	1,5		3,1		N/mm ²	EN310
Bending strength (t=15 mm, welding lines crosswise)	1,2		2,5		N/mm ²	EN310
Transverse tensile strength (perpendicular to plane)	1,9		3,0		N/mm ²	ASTM C297
Vicat softening temperature 1 (on the welding lines)	-		80		°C	EN ISO 306
Vicat softening temperature 2 (between the welding lines)	-		73		°C	EN ISO 306
Thermal conductivity	0,036		0,043		W/ (m . K)	EN 12667
Therm. Expansion coefficient - Thickness direction - Length / Width (range -20°C to + 60°C)	69,3 74,6		67,8 69,3		10 ⁻⁶ /K	DIN 53752
Water Vapour Diffusion (15 mm thickness)	16,8		38,3		s _d	EN 12086
Water Vapour Diffusion (50 mm thickness)	56,2		74,0		s _d	EN 12086
Resistance to axial withdrawal of screws ³⁾ - Screw-in depth 15 mm - Screw-in depth 20 mm - Screw-in depth 30 mm - Screw-in depth 40 mm	190 290 470 630		400 520 830 1080		P	EN 320 (referring to)
Building material class / Fire behavior	E		E		-	EN 13501
Recycling PET Ratio*	95		95		%	-
Absorption of water (after 7 days water storage)	Ca. 2,0		Ca. 2,0		Vol.-%	Internal
Swelling in thickness (after 7 days water storage)	< 0,5		< 0,5		%	Internal

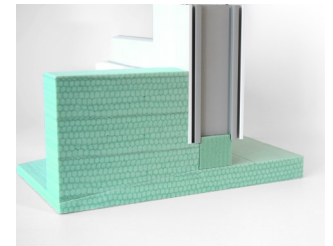
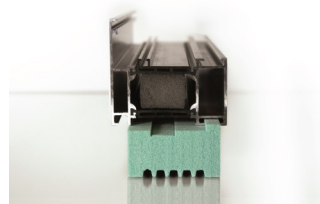
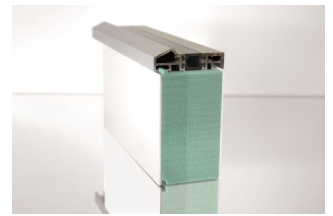
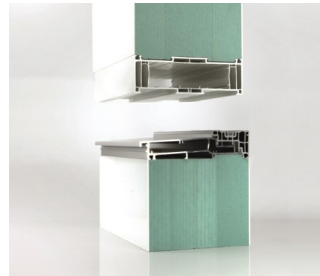
*Note: no halogenated blowing agents are used, nor HBCD. ¹⁾ Tested on 60mm ²⁾ Tested on 10mm





Advantages

- ✓ Efficient thermal break
- ✓ Excellent mechanical strength
- ✓ High compressive strength
- ✓ Breathable material
- ✓ Permeable to water vapor diffusion
- ✓ Lower thermal conductivity
- ✓ Optimal insulation properties
- ✓ Lightweight and cost-effective composite structure



"The information provided is based on current knowledge and experience. This data sheet may become invalid and we reserve the right to make changes to designs and processes as we continually improve quality. Processing instructions including full system component details should be adhered to. Visit partel.com for the most up to date information"



www.partel.ie
sales@partel.ie
P: 0818 33 33 55



www.partel.co.uk
sales@partel.co.uk
P: 02037 401918



www.partel.com
sales@partel.com
P: 888 487 1012