



**SAVE ENERGY.
BUILD SMART.**



ABOUT PARTEL

FOUNDED IN 2011 BY HUGH WHIRISKEY, PARTEL IS A COMPANY THAT PRODUCES AND SUPPLIES HIGH PERFORMANCE, ENERGY-EFFICIENT SYSTEMS IN ORDER TO BUILD SMART.

Established in the West of Ireland, we have experienced quick and healthy growth. Today we have a presence in 3 regions, Ireland, UK and recently North America. We provide a wide range of Airtight and Windtight Systems for the low-energy building sector.

Partel's portfolio has been developed with new products, offering builders a combination of technical expertise, functionality, sustainable quality and price. VARA, IZOPERM, EXOPERM, CONIZO and CONEXO are some of our brands which cover a wide range of internal and external applications. We continue to expand our portfolio with innovative systems including membranes, tapes and adhesives that inspire green building.

Technical excellence is at the core of our product development. We invest in high-performance products to support innovation and quality of life, with an unwavering focus on sustainability.

ENERGY CONSUMPTION WILL CONTINUE TO INCREASE IN THE NEXT DECADES. THE SOLUTION IS EFFICIENCY – SAVE ENERGY. BUILD SMART.

FOR THAT, WE LEVERAGE TECHNOLOGICAL INNOVATION TO USE LESS ENERGY, AND TO USE THE ENERGY THAT WE DO CONSUME, MORE INTELLIGENTLY.

BENEFITS TO ENHANCE THE BUILDING PERFORMANCE, IN EACH PRODUCT

- ⊗ Reduce energy consumption
- ⊗ Improve air quality
- ⊗ Reduce noise
- ⊗ Reduce heating/cooling costs
- ⊗ Thermal and humidity protection
- ⊗ Minimise pollutants for homeowners
- ⊗ Avoid structural damage
- ⊗ Achieve specified R/U values

Our background and expertise in Engineering, Architecture and Building physics will ensure the best-solutions for every construction challenge:

- ⊗ Customised technical support
- ⊗ WUFI condensation risk analysis
- ⊗ Onsite inspections
- ⊗ CPD Training and Seminars



EEBS
Energy Efficient
Building Seminar

BEST PRACTICE FOR AIR & WINDTIGHT STRUCTURES



This RIBA Approved CPD focuses on the importance of air and wind tightness in low-energy building design. It discusses the importance of external and internal membranes, their sealing and highlights best practice on how to specify and install. It also focuses on the risks associated with airtight buildings and how best to overcome these. The duration of this seminar is 45 minutes presentation plus a 10 minute questions & answers session.

Partel Business Development Managers are available for CPD bookings across the whole of the UK and Ireland.

**CONTACT PARTEL ON +353 (0) 818 33 33 55
OR EMAIL CONTACT@PARTEL.COM**

TECHNICAL WARRANTY

WE OFFER A 10 YEAR LIMITED WARRANTY AND A COMPREHENSIVE LIMITED SYSTEM WARRANTY.



The system warranty applies to the Partel Airtight and Windtight systems. It applies where Partel products are installed in as part of a complete Partel system insofar as Partel products are available. The terms of this warranty varies per region. Please refer to your local website for current information.

Partel 

VARA™

PLUS



Fields of Application

- ✓ Internal use
- ✓ Suitable for all insulation types
- ✓ Roof and timber frame wall

1.5M X 50M=75M²
59'-1/16" X 164'-1/2" = 807 SF

SMART VAPOUR CONTROL MEMBRANE

Why Partel VARA PLUS?

- ✓ Best SD value range (Humidity variable vapour Sd-values from 0.4 m to >60 m) ensures optimum summer drying conditions and winter protection
- ✓ Optimal airtightness and water vapour transmission rate in different climate conditions
- ✓ Elastic and durable
- ✓ Reinforced for optimal strength
- ✓ Durable towards UV ageing
- ✓ Optimal protection against humidity, ensures drying of the building structure
- ✓ Extremely safe system
- ✓ Easy and quick to install
- ✓ Energy-efficient
- ✓ Increased durability of buildings
- ✓ Reduced heating/cooling costs

WEIGHT	EN 1849-2	110
SD- VALUE	EN 1931	0.4 M TO > 60 M
TEMP RESISTANCE		-40° TO 80°C
TENSILE STRENGTH	EN 12311-2	MD 350 / CD 315
NAIL TEAR RESISTANCE	EN 12310-1	MD 350 / CD 375



Partel 

VARA™ FLUID



Fields of Application

- ✓ Internal and external use
- ✓ Can be applied both vertically and horizontally
- ✓ Wall to floor
- ✓ Wall to ceiling
- ✓ Wall to timber
- ✓ General construction joints

Quantity

10KGe

FLEXIBLE, AIRTIGHT, SMART VAPOUR CONTROL LAYER

VARA FLUID is a breathable liquid membrane engineered to provide superior airtightness for long-term performance of the building envelope.

Why Partel VARA FLUID?

- ✓ Permeable to water vapour
- ✓ Excellent adhesion on various surfaces
- ✓ Ready-to-use product shortens application time, especially in commercial projects
- ✓ Ensures a continuous, flexible and permanent airtight
- ✓ Designed to achieve Passive Standard 0.6 AC/h in buildings, but can reach 0.2 AC/h if required
- ✓ Durable airtight connections
- ✓ LOW VOC polymer-based liquid

Easy to apply with

- ✓ Roller
- ✓ Airless paint spray device



UV RESISTANCE		3 MONTHS
SD VAPOR VARIABILITY	EN-ISO 12572	0.15-16 @ 0.3MM
USAGE (DEPENDS ON SURFACE)		MIN 500G/M ²
WATER RESISTANCE	EN-1928	W1
PROCESSING TEMPERATURE		+5°C

Partel 

VARA™

FLUID BRUSH



Fields of Application

- ✔ Internal and external use
- ✔ Can be applied both vertically and horizontally
- ✔ Wall to floor
- ✔ Wall to ceiling
- ✔ Wall to timber
- ✔ Pipe and ducting penetrations
- ✔ General construction joints

PAINT-ON AIRTIGHT, SMART VAPOUR CONTROL LAYER

VARA FLUID BRUSH is a water-based smart vapor control coating providing a continuous airtightness over cracks and gaps in both new build and retrofit projects.

Why Partel VARA FLUID BRUSH?

- ✔ Permeable to water vapour
- ✔ Good adhesion on various surfaces
- ✔ Ready-to-use, fast application
- ✔ Flexible, ensures adequate coverage
- ✔ Durable airtight connections
- ✔ Brush applied, no need for primer
- ✔ LOW VOC polymer based liquid
- ✔ Ideal solution for complex details such as doors, windows, corners etc.

Quantity

5KG e



UV RESISTANCE		3 MONTHS
SD VAPOR VARIABILITY	EN-ISO 12572	0.15-16 @ 0.3MM
USAGE (DEPENDS ON SURFACE)		+/- 1KG /M²
WATER RESISTANCE	EN-1928	W1
PROCESSING TEMPERATURE		+5°C



IZOPERM PLUS

OPTIMUM PERFORMANCE VAPOUR CONTROL MEMBRANE



Why Partel IZOPERM PLUS?

Fields of Application

- ✓ Internal use
- ✓ Suitable for all insulation types
- ✓ Roof and timber frame wall

- ✓ Designed to be compatible with all conventional building systems
- ✓ Extremely strong
- ✓ Elastic and Durable
- ✓ Reinforced for optimum strength
- ✓ Optimum Sd value for most constructions
- ✓ Durable towards UV ageing
- ✓ Optimal protection against humidity, ensures drying of the building structure



0.75M X 50M=37.5M²
 29-17/32" X 164'-1/2" = 403.5 SF

1.5M X 50M=75M²
 59-1/16" X 164'-1/2" = 807 SF

3M X 50M=150M²
 9' 10-1/3" X 164'-1/2" = 1615 SF

WEIGHT	EN 1849-2	100
SD- VALUE	EN 1931	5
TEMP RESISTANCE		-40 °C TO 80 °C
TENSILE STRENGTH	EN 12311-2	MD 285 / CD 385
NAIL TEAR RESISTANCE	EN 12310-1	MD 260 / CD 246

Partel 

EXOPERM™ MONO

TRUST THE EXOPERM MONO PROTECTION


**MONOLITHIC
TECHNOLOGY**



EXOPERM

MONO

150

1.5M X 50M
59'-1/8" x 164'-11/2" = 827'

UP TO 13 TIMES MORE DURABLE

EXOPERM MONO is a premium quality membrane that provides superior protection against water vapor, air, and radon gas. It is designed for use in a wide range of applications, including residential and commercial buildings, and is available in a variety of thicknesses and widths. EXOPERM MONO is made from a proprietary blend of polyethylene and polypropylene, which provides excellent resistance to punctures, tears, and UV radiation. It is also highly resistant to mold and mildew, making it an ideal choice for use in damp or humid environments. EXOPERM MONO is easy to install and can be used in a variety of applications, including roofs, walls, and foundations. It is a reliable and long-lasting solution for protecting your building from the elements.

ELASTIC AND DURABLE
EXOPERM MONO TECHNOLOGY
WIND RESISTANCE TO UPRISING RAIN
WINDPROOF BUT DIFFUSION OPEN

Partel 

EXOPERM™ 150
MONO

Partel 

EXOPERM™ 150
MONO CONNEX

NEXT GENERATION MONOLITHIC MEMBRANE



- ✔ 3-Ply sarking, roof underlay and wind barrier with Next Generation Monolithic TPE functional layer
- ✔ Exoperm Mono membrane transports vapour to outside. The TPE functional layer located in the middle of the product, is vapor open whilst having excellent waterproofing properties
- ✔ The Monolithic TPE layer is continuous, free of pores, offering a complete barrier against the passage of water and long term durability for the building

Why Partel EXOPERM MONO 150?

- ✔ Highly breathable membrane (Sd 0.07 m)
- ✔ High resistance to penetration of water (W1)
- ✔ Ideal Airtightness and vapour transmission
- ✔ Excellent ageing resistance due to the Monolithic Technology
- ✔ Windtight, Highly diffusion open
- ✔ Optimal UV stability
- ✔ Helps to avoid structural damage

INTEGRATED TAPES ON BOTH SIDES AVAILABLE IN CONNEX VERSION, ENSURES OPTIMUM WINDTIGHTNESS.

Fields of Application

- ✔ External use
- ✔ Suitable for all insulation types
- ✔ Roof and wall

CE

1.5M X 50M=75M²
59'-1/16" X 164'-1/2" = 807 SF

3M X 50M=150M²
9' 10-1/3" X 164'-1/2" = 1615 SF

NEW



EXOPERM™ 200 MONO DURO

MONOLITHIC FIRE-RESISTANT MEMBRANE

Why Partel EXOPERM MONO DURO 200?



- ✓ Increased Fire Resistance— B1
- ✓ Monolithic TPU Technology
- ✓ High Level of UV Resistance
- ✓ Ideal Airtightness and Vapour transmission
- ✓ Long term resistance to driving rain
- ✓ Windproof / Diffusion open
- ✓ Systematic safety and energy-efficient solution
- ✓ 2-Ply sarking, roof underlay and wind barrier with Next Generation Monolithic TPU functional layer

Fields of Application

- ✓ External use
- ✓ Roof and facade/wall
- ✓ Suitable for all insulation types

The TPU functional layer is vapor open while creates a complete wind tight, waterproof membrane that actively expels out any water, providing long-lasting UV protection and increased fire resistance.

1.5M X 50M=75M²
59-1/16" X 164'-1/2" = 807 SF



WEIGHT	EN 13859-2	195 G/M² ± 10%
SD-VALUE M	EN 13859-2	0.13 M
UV RESISTANCE	EN 12311-2	>10 YEARS*
FIRE RESISTANCE	DIN 4102	B1
TEMPERATURE RESISTANCE		-40°C TO 80°C

*does not apply in the case of open air weathering, but only when clad with a distance of approx. 5 cm and a maximum joint area of 40%

Partel 

ECHOFOIL EXO



Fields of Application



- ✓ External use
- ✓ Roof and Wall

1.5M X 50M=75M²
59'-1/16" X 164'-1/2" = 807 SF

3M X 50M=150M²
9' 10'-1/3" X 164'-1/2" = 1615 SF

NEXT GENERATION MONOLITHIC REFLECTIVE MEMBRANE

Why Partel ECHOFOIL EXO?

- ✓ Breathable membrane with low SD value
- ✓ 15 times more durable than micro-porous products, due to the monolithic layer
- ✓ Water resistant (W1)
- ✓ Significant improvement of thermal resistance and insulation properties
- ✓ Humidity controlling and insulating properties
- ✓ Cost savings
- ✓ Windtight
- ✓ Longer lasting
- ✓ Optimal UV Stability

This Monolithic TPE layer results in a stronger, more flexible membrane with greater resistance to corrosion and abrasion compared to the micro-porous membranes that are prevalent on the market.

WEIGHT	ISO 536	150 G/M²
SD- VALUE M	EN 1931	0.25 M
TENSILE STRENGTH MD/CD	EN 12311-2	150/140 N
RESISTANCE TO WATER PENETRATION	EN 13111	W1
TEMP RESISTANCE		-20°C TO 80°C
THERMAL RESISTANCE	BS ISO 9869	0.75M² K/W

Partel 

ECHOFOIL IZO



Fields of Application



- ✓ Internal use
- ✓ It's damp proofing properties make it ideal for climate class 4 rooms such as saunas, swimming pools, kitchens and sport facilities

1.5M X 50M=75M²

59'-1/16" X 164'-1/2" = 807 SF

3M X 50M=150M²

9' 10-1/3" X 164'-1/2" = 1615 SF

REFLECTIVE VAPOUR CONTROL LAYER

Why Partel ECHOFOIL IZO?

- ✓ Lowest emissivity on the market reflecting up to 97%
- ✓ Water resistant (W1)
- ✓ Damp proofing
- ✓ Significant improvement of thermal resistance and insulation properties
- ✓ Humidity controlling and insulating
- ✓ Cost savings
- ✓ Great durability
- ✓ Optimal UV Stability

The reflective Vapour Control Layer (VCL) helps to improve the thermal performance of a structure via reflecting up to 97% of the internal heat from inside the structure back into the building. Used in conjunction with Echofoil Exo it increases thermal performance further and helps to lower U values.

WEIGHT	EN 1849-2	120 G/M²
SD- VALUE M	EN 1931	100 M
TEMP RESISTANCE		-20°C TO 80°C
TENSILE STRENGTH MD/CD	EN 12311-2	320 / 280 N
THERMAL RESISTANCE	BS ISO 9869	0.75M² K/W



VARASeal™



VARASeal™ SL

AIR AND WINDTIGHT SEALING TAPE

Why Partel VARASeal?



- ✔ High shear strength
- ✔ High performance airtight tape
- ✔ Resistant to weathering, UV stability
- ✔ Lifetime* design - excellent ageing resistance due to the strong acrylic adhesive
- ✔ Water resistant adhesive
- ✔ Extremely stable
- ✔ Environmentally friendly - free of solvents and emulsifiers
- ✔ Outdoor exposure up to 3 months
- ✔ Easy to use – SL version has split release backing for quick installation
- ✔ Airtight connections to DIN 4108-11

✔ CAN BE PLASTERED ✔ MOISTURE VARIABLE

Fields of Application

- ✔ Internal and external use
- ✔ Overlaps, Windows, Doors, Corners

SL VERSION

During application, 2 rear liners can be removed separately to facilitate easy installation.



VARASEAL

60MM X 25M
(2-3/8" X 82')

VARASEAL SL

80MM X 25M
(3-1/8" X 82')

150MM X 25M
(5 7/8" X 82')

200MM X 25M
(7 7/8" X 82')

* Adhesion: Before sticking tapes the surface should be clean and dry, water repelling substances are not suitable for adhesion. Use Primers (Acraprime) on porous or masonry surfaces. Adhesion is assured on all Partel membranes, planed timber, painted timber, plastics and metals. The more suitable the surface for adhesion the better the results, Folds, creases or substrate issues impact on the system. It is the responsibility of the applicator to perform adhesion tests prior to proceeding - where required. It is necessary to apply pressure using Partel 'Helping Hand' applicator. Tapes are not designed for tensile strains.

Partel **VARASeal™ SL
X**

✔ CAN BE PLASTERED

✔ MOISTURE VARIABLE

Fields of Application

- ✔ Internal and external use
- ✔ Windows, doors, corners

SL VERSION

During application, 2 rear liners can be removed separately to facilitate easy installation.

AIRTIGHT AND WINDTIGHT SEALING TAPE

Why Partel VARASeal X SL?

- ✔ High shear strength
- ✔ High performance airtight tape
- ✔ **DOUBLE SIDED ADHESIVE ZONE**
- ✔ Resistant to weathering, UV stability
- ✔ Lifetime* design - permanent ageing resistance due to the strong acrylic adhesive
- ✔ Water resistant adhesive
- ✔ Easy to use – split release backing for quick installation
- ✔ **FINGERLIFT - ACCELERATE THE APPLICATION PROCESS**
- ✔ Extremely stable
- ✔ Environmentally friendly - free of solvents and emulsifiers
- ✔ Outdoor exposure up to 3 months
- ✔ Airtight connections to DIN 4108-11

100 MM X 25)
(3-7/8" X 82')

150MM X 25M
(5 7/8" X 82')



* Adhesion: Before sticking tapes the surface should be clean and dry, water repelling substances are not suitable for adhesion. Use Primers (Acraprime) on porous or masonry surfaces. Adhesion is assured on all Partel membranes, planed timber, painted timber, plastics and metals. The more suitable the surface for adhesion the better the results, Folds, creases or substrate issues impact on the system. It is the responsibility of the applicator to perform adhesion tests prior to proceeding - where required. It is necessary to apply pressure using Partel 'Helping Hand' applicator. Tapes are not designed for tensile strains.

AIRTIGHT JOINING OF VAPOUR CONTROL LAYER



Fields of Application

- ✓ Internal use
- ✓ Windows, doors, roof beams, corners



Why Partel CONIZO?

- ✓ High performance airtight tape
- ✓ Lifetime* design - excellent ageing resistance due to the strong acrylic adhesive
- ✓ Water repelling carrier
- ✓ Easy to tear by hand
- ✓ Extremely stable
- ✓ Environmentally friendly - free of solvents and emulsifiers
- ✓ Easy to use - SL version has split release backing for quick installation
- ✓ Airtight connections to DIN 4108-11

SL VERSION

During application, 2 rear liners can be removed separately to facilitate easy installation.

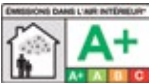
60MM X 40M (2-3/8" X 131'3")

* Adhesion: Before sticking tapes the surface should be clean and dry, water repelling substances are not suitable for adhesion. Use Primers (Acraprime) on porous or masonry surfaces. Adhesion is assured on all Partel membranes, planed timber, painted timber, plastics and metals. The more suitable the surface for adhesion the better the results, Folds, creases or substrate issues impact on the system. It is the responsibility of the applicator to perform adhesion tests prior to proceeding - where required. It is necessary to apply pressure using Partel 'Helping Hand' applicator. Tapes are not designed for tensile strains.

Partel 

CONIZO™

PATCH



AIRTIGHT SEAL FOR INJECTION HOLES

Why Partel CONIZO PATCH?

- ✔ High-Performance airtight tape
- ✔ Lifetime* design – excellent ageing resistance due to the strong acrylic adhesive
- ✔ Extremely stable
- ✔ High shear strength
- ✔ Water resistant adhesive
- ✔ Outdoor exposure up to 3 months
- ✔ Airtight connections to Part L and DIN 4108-7
- ✔ Lowest VOC rating in hazardous substance test

Fields of Application

- ✔ Internal use
- ✔ Suitable for injection holes

160MM X 160MM X 125 UNITS

(6-5/16" X 6-5/16" X 125 UNITS)

* Adhesion: Before sticking tapes the surface should be clean and dry, water repelling substances are not suitable for adhesion. Use Primers (Acraprime) on porous or masonry surfaces. Adhesion is assured on all Partel membranes, planed timber, painted timber, plastics and metals. The more suitable the surface for adhesion the better the results, Folds, creases or substrate issues impact on the system. It is the responsibility of the applicator to perform adhesion tests prior to proceeding - where required. It is necessary to apply pressure using Partel 'Helping Hand' applicator. Tapes are not designed for tensile strains.



AIRTIGHT AND WINDTIGHT TAPE



Fields of Application

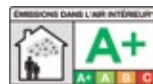
- ✔ Internal and external use
- ✔ Roof, Wall
- ✔ Joining of membranes, timber, metals
- ✔ Adheres to timber, masonry, concrete, PVC, metal and Partel membranes

Why Partel CONEXO?

- ✔ High performance airtight tape
- ✔ Lifetime* design - excellent ageing resistance due to the strong acrylic adhesive
- ✔ Easy to use - SL version has split release backing for quick installation
- ✔ Easy to tear by hand, accelerate the application process
- ✔ Water repelling carrier
- ✔ Reinforced with elasticity
- ✔ Environmentally friendly - free of solvents and emulsifiers
- ✔ Airtight connections to DIN 4108-11

SL VERSION

During application, 2 rear liners can be removed separately to facilitate easy installation.



CONEXO

60MM X 25M
(2-3/8" X 82')

CONEXO SL

60MM X 25M
(2-3/8" X 82')

100MM X 25M
(3-7/8" X 82')

* Adhesion: Before sticking tapes the surface should be clean and dry, water repelling substances are not suitable for adhesion. Use Primers (Acraprime) on porous or masonry surfaces. Adhesion is assured on all Partel membranes, planed timber, painted timber, plastics and metals. The more suitable the surface for adhesion the better the results, Folds, creases or substrate issues impact on the system. It is the responsibility of the applicator to perform adhesion tests prior to proceeding - where required. It is necessary to apply pressure using Partel 'Helping Hand' applicator. Tapes are not designed for tensile strains.

Partel 

CONLEX

BUTYL



FLEXIBLE BUTYL TAPE WITH HIGH TACK

Why Partel CONLEX BUTYL?

- ✔ High performance airtight tape
- ✔ Butyl rubber base tape
- ✔ High moisture-repellent - water resistant
- ✔ High adhesion and shear strength
- ✔ Lifetime flexibility
- ✔ Flexible - adapts to most surfaces and angles
- ✔ Environmentally friendly - free of solvents and emulsifiers
- ✔ Outdoor exposure up to 3 months
- ✔ Airtight connections to DIN 4108-11

Fields of Application

- ✔ Internal and external use
- ✔ Suitable to form parapets and sills
- ✔ Airtight connection



50MM X 5M
(2" X 16'-5')

200MM X 20M
(7 7/8" X 65 6/8")

CONPRESeal

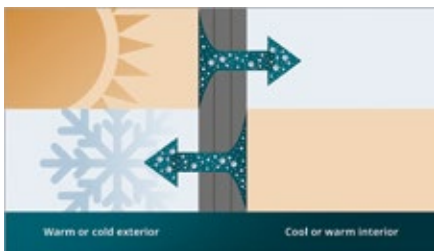
3V BG1



✓ PASSIVE HOUSE COMPLIANT ✓ MOISTURE VARIABLE

Fields of Application

- ✓ Ideal for an easy and reliable sealing of windows and doors for wood construction, prefabricated construction masonry, framework construction and concrete construction
- ✓ After the installation, the polyurethane foam expands in the joint and provides a durable joint sealing and an optimal vapour management

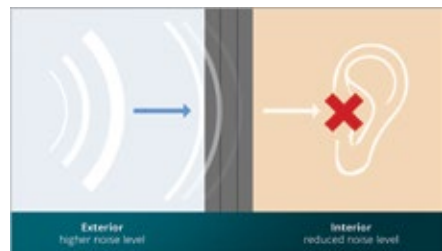


MULTI-FUNCTIONAL TAPE

Why Partel CONPRESeal 3V BG1?

- ✓ Highly innovative tape
- ✓ Provide an excellent thermal, sound, air and rain barrier
- ✓ Very easy to use
- ✓ Their “moisture-adapting” membranes ensure that the joint can dry out all year
- ✓ Can be used in any weather conditions due to the protection layer
- ✓ Driving rain & air tight
- ✓ Breathable tape
- ✓ Excellent thermal and sound insulation
- ✓ Very low emissions
- ✓ DIN 18542:2009 certified
- ✓ Triple-Layer Joint Sealing System ensures tested joint sealing of windows suitable for all kind of buildings including Passive Houses in order to reduce energy costs and provides long-term performance and reliability of the sealed joint

Allows for movements of building components – e.g. linked to temperature changes.





CONPRESeal BG1



✓ ASTM TESTED

✓ HURRICANE TESTED

Fields of Application

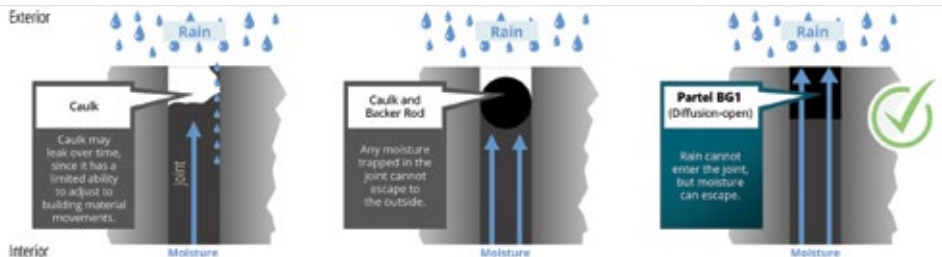
- ✓ Ideal for an easy and reliable sealing of windows and doors for wood construction, prefabricated construction masonry, framework construction and concrete construction
- ✓ BG1 is also suitable to seal facade joints made of brick, concrete, ACM panels and curtain wall

JOINT SEALING TAPE

Why Partel CONPRESeal BG1?

- ✓ Extremely durable, exceeds the requirements for protection against driving rain, airtightness and resistance to weathering according to the highest European standard for joint sealant tapes DIN 18542:2009
- ✓ Driving rain & air tight
(Resistant to driving rain)
- ✓ Breathable tape
- ✓ Excellent thermal and sound insulation
- ✓ Windproof
- ✓ Very low emissions
- ✓ 15 years function guarantee (tested and certified for a field installation after 15 years in service)

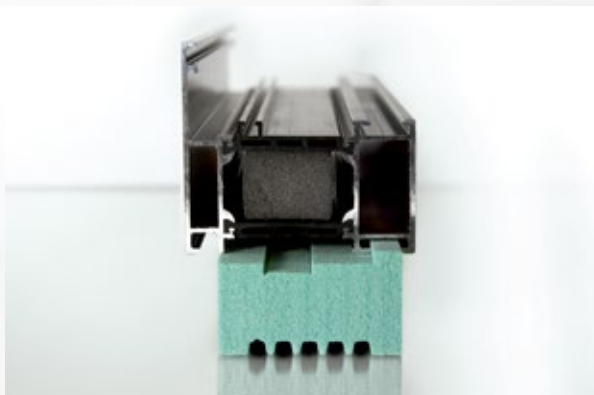
Available in various dimensions. Typical tape joint dimensions are e. g. 1/4 - 1/2" and 3/8 - 5/8".



Partel 

ALMA

THERM



**EFFICIENT
THERMAL
BREAK**



**HIGH
COMPRESSIVE
STRENGTH**



**EXCELLENT
MECHANICAL
STRENGTH**

ALMA THERM IS A PET-BASED PRODUCT

**25 X 1.5 L PET BOTTLES
PRODUCE 4.5 X 35 X 35CM
ALMA THERM RAW BOARD**



NEW

100% RECYCLED PANEL FOR HI-PERFORMANCE STRUCTURAL INSULATION



Partel ALMA THERM is a PET-based panel, the NEW sustainable alternative to conventional construction materials for reducing thermal bridges.

Owing to its versatility, being lighter, more compact and with a lower thermal conductivity, this green solution is designed to improve the energy efficiency of the building.

Fields of Application

- ✓ Internal and external use
- ✓ Thermal separation
- ✓ Doors
- ✓ Windows

Raw Density

- ✓ 115 kg/m³
- ✓ 180 kg/m³

1218 X 1005 X 50MM (4' X 3' 4" X 2")

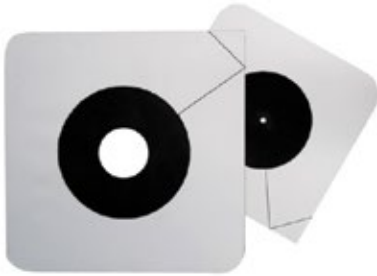
1218 X 1005 X 75MM (4' X 3' 4" X 3")

BESPOKE SIZES UPON REQUEST

Why Partel ALMA THERM?

- ✓ Efficient thermal break
- ✓ Excellent mechanical strength
- ✓ High compressive strength
- ✓ Low water absorption
- ✓ Permeable to water vapor diffusion
- ✓ Excellent thermal conductivity / R-value
- ✓ Environmentally-friendly core material (100% recyclable)
- ✓ Lightweight and cost-effective composite structure

PROPERTIES	115	180	UNIT	STANDARD
COMPRESSIVE STRENGTH	1.5	3.2	N/mm ²	EN 826
E-MODULUS COMPRESSION	67	118	N/mm ²	EN 826
THERMAL CONDUCTIVITY	0.036	0.043	W/ (m . K)	EN 12667
WATER VAPOUR DIFFUSION	16.8	38.3	Sd	EN 12086



Fields of Application

- ✔ Internal and external use
- ✔ Ideal option to seal cable and pipe penetration

SEALING GROMMIT

Why Partel KABSEAL?

- ✔ Manufactured from flexible high quality modified butyl with acrylic adhesive
- ✔ Fast and accurate airtight sealing of penetrations
- ✔ Temperature resistance - 40°C to 150°C
- ✔ Extremely flexible - Moulds to shape of pipe or cable
- ✔ Extremely stable and hermetically
- ✔ Water resistant
- ✔ Lifetime* design - permanent ageing resistance due to the strong acrylic adhesive
- ✔ Environmentally friendly - free of solvents and emulsifiers
- ✔ Airtight connections to DIN 4108-11

150*150 **PACKS OF 5 FOR HOLE SIZES 6-10MM**
(5/16"X5/16" FOR HOLE SIZE 1/4" TO 3/8")

150*150 **PACKS OF 5 FOR HOLE SIZES 15-30MM**
(5/16"X5/16" FOR HOLE SIZE 9/16" TO 1 3/16")

180*180 **PACKS OF 2 FOR HOLE SIZES 50-90MM**
5/16"X5/16" FOR HOLE SIZE 2" TO 3 3/4"

**OTHER
DIMENSIONS
AVAILABLE ON
REQUEST**

* Adhesion: Before sticking tapes the surface should be clean and dry, water repelling substances are not suitable for adhesion. Use Primers (Acraprime) on porous or masonry surfaces. Adhesion is assured on all Partel membranes, planed timber, painted timber, plastics and metals. The more suitable the surface for adhesion the better the results, Folds, creases or substrate issues impact on the system. It is the responsibility of the applicator to perform adhesion tests prior to proceeding - where required. It is necessary to apply pressure using Partel 'Helping Hand' applicator. Tapes are not designed for tensile strains.

Partel 

ACRABOND™

LIQUID



**CONTENTS:
310ML & 600ML**

LIQUID ADHESIVE FOR AIRTIGHT CONNECTIONS

Why Partel ACRABOND?

- ✓ Free of solvents - environmentally friendly
- ✓ High adhesion to most surfaces
- ✓ Durable flexible
- ✓ Ageing resistant
- ✓ Airtight connections to DIN 4108-11
- ✓ Store and transport frost free
- ✓ Odourless

Fields of Application

- ✓ Indoor usage for airtight connections of airtight membranes including Partel Vara and Izoperm to DIN 4108
- ✓ Suitable for plaster, untreated wood, concrete, stone, moisture and vapour barriers
- ✓ Surfaces must be clean, dry and free of dust and grease
- ✓ One surface must always be absorbent
- ✓ Not suitable for Sauna and swimming pool





Fields of Application

- ✓ Internal use
- ✓ Bonds to concrete, masonry, wood, Plasterboards etc.
- ✓ Application temperature: -10°C to + 80°C (14f° - 176f°)

ROLL ADHESIVE FOR AIRTIGHT CONNECTIONS

Why Partel ACRALINE?

- ✓ High performance adhesive with consistent thickness
- ✓ Designed life 100 years* - permanent
- ✓ Free of solvents, VOCs - environmentally friendly
- ✓ Immediate adhesive strength - no drying time necessary
- ✓ High shear strength
- ✓ Can be repositioned
- ✓ Ageing resistant and permanently flexible
- ✓ Adhesion to DIN 4108-11 N/25 mm

*Refer to warranty data and processing sheets for complete details.

9/25MM WIDE.
3.75MM DEEP.
8M LONG.
(1"/3/8" WIDE, 26'3" LONG)

* Adhesion: Before sticking tapes the surface should be clean and dry, water repelling substances are not suitable for adhesion. Use Primers (Acraprime) on porous or masonry surfaces. Adhesion is assured on all Partel membranes, planed timber, painted timber, plastics and metals. The more suitable the surface for adhesion the better the results, Folds, creases or substrate issues impact on the system. It is the responsibility of the applicator to perform adhesion tests prior to proceeding - where required. It is necessary to apply pressure using Partel 'Helping Hand' applicator. Tapes are not designed for tensile strains.



ACRAPRIME™

LIQUID

ACRYLIC PRIMER FOR PRE-TREATMENT OF POROUS SURFACES



Why Partel ACRAPRIME?

- ✔ Free of solvents
- ✔ Quick drying = time saving
- ✔ Creates strong adhesion for better results
- ✔ Can be used with all Partel tapes and adhesives

Fields of Application

- ✔ Internal and external use
- ✔ ACRAPRIME is used as a primer for porous surfaces like wooden fibreboards, concrete or masonry
- ✔ Apply Acraprime with a paint brush and allow to dry for 10-30 minutes (depending on temperature). Apply Partel tapes or adhesive products afterwards using some pressure

**CONTENTS:
1000ML**

STORAGE STABILITY	2 YEARS
PROCESSING TEMPERATURE	-40°C TO +90°C (-40°F - +194°F)
MATERIALPRIMER	DISPERSION BASED ON POLYACRYLATE

NEW



ACRAPRIME™

SPRAY



SPRAY PRIMER FOR PRE-TREATMENT OF POROUS SURFACES

Why Partel ACRAPRIME SPRAY?

- ✓ Sprayable primer – fast and easy to apply
- ✓ Makes overhead and vertical work easier
- ✓ 3-position spray head: Low, Medium and High. It is possible to regulate the spray volume
- ✓ Short drying time
- ✓ Very low odour
- ✓ Creates strong adhesion for better results
- ✓ High initial tack, suitable for use in difficult conditions (cold, damp)
- ✓ Can be used with all Partel tapes and adhesives

Fields of Application

- ✓ External & Internal use
- ✓ ACRAPRIME SPRAY is used as a primer for porous surfaces like concrete, plaster, masonry, wood, fibre board and other building materials
- ✓ Apply ACRAPRIME SPRAY vertically. Chose the nozzle regulation and spray on the substrates at a distance of 20 cm

CONTENTS:
500ML



COLOUR	LIGHT YELLOW
BASE MATERIAL	SYNTHETIC MIX AND RESINS IN SOLVENT
PROCESSING TEMPERATURE PRIMER	FROM -5°C

Partel 

**HELPING
HAND™**



PROFESSIONAL TAPE PRESSURE APPLICATOR

Why Partel HELPING HAND?

- ✔ Extremely durable and flexible
- ✔ Consistent and prevents creases
- ✔ Windproof and rainproof
- ✔ Tapered edges for easy application of Partel tapes
- ✔ Protect your hands from getting sore and/or hot while rubbing down long stretches of tape
- ✔ Can be used also on small difficult surfaces like corners

100MM X 80MM X 2MM

PRODUCTS OVERVIEW



EXOPERM 150 MONO

NEXT GENERATION
MONOLITHIC MEMBRANE

- ⊙ Wind proof but diffusion open
- ⊙ Available with integrated tapes on both sides



CONEXO

INTERIOR AND EXTERIOR
AIRTIGHT TAPE

- ⊙ Reinforced with elasticity
- ⊙ Split release backing



EXOPERM 200 MONO DURO

FIRE RESISTANT MONOLITHIC
MEMBRANE

- ⊙ Increased Fire Resistance – B1
- ⊙ High Level of UV Resistance



IZOPERM PLUS

OPTIMUM AIRTIGHT AND VAPOUR
CONTROL MEMBRANE

- ⊙ High performance airtightness
- ⊙ Reinforced for optimum strength



NAILSeal

NAIL SEALING TAPE TO SEAL
BETWEEN BATTENS AND
EXOPERM

- ⊙ Prevents water ingress during construction and afterwards



CONIZO

INTERIOR WINDOW
INSTALLATION TAPE

- ⊙ High performance airtight tape
- ⊙ Split release backing



ECHOFOIL EXO

NEXT GENERATION
MONOLITHIC REFLECTIVE
MEMBRANE

- ⊙ Humidity controlling
- ⊙ insulating and Breathable membrane



CONPRESeal 3V B61

MULTI-FUNCTIONAL TAPE

- ⊙ Excellent thermal, sound, air and rain barrier



CONLEX BUTYL

FLEXIBLE BUTYL TAPE
WITH HIGH TACK

- ⊙ Easy to install
- ⊙ Elastic and durable

ACRABOND LIQUID

MULTIPURPOSE AIRTIGHT
ADHESIVE

- ⊙ Solvent free
- ⊙ Durable and flexible



ACRAPRIME SPRAY

SPRAY PRIMER FOR PRE-
TREATMENT OF POROUS
SURFACES

- ⊙ Fast and easy to spray
- ⊙ Permanently tacky



HELPING HAND

ASSISTS WITH PRESSURE
APPLICATION OF TAPES



VARA PLUS

MOISTURE VARIABLE AIRTIGHT MEMBRANE

- ✔ Variable range ensures optimum drying conditions
- ✔ Reinforced for optimum strength



IZOPERM PLUS

OPTIMUM AIRTIGHT AND VAPOUR CONTROL MEMBRANE

- ✔ High performance airtightness
- ✔ Reinforced for optimum strength



CONEXO

INTERIOR AND EXTERIOR AIRTIGHT TAPE

- ✔ Reinforced with elasticity
- ✔ Split release backing



EXOPERM 150 MONO

NEXT GENERATION MONOLITHIC MEMBRANE

- ✔ Wind proof but diffusion open
- ✔ Available with integrated tapes on both sides



VARA FLUID

FLEXIBLE, AIRTIGHT, SMART VAPOUR CONTROL LAYER

- ✔ Fluid applied membrane
- ✔ Vapour permeable layer



CONIZO

INTERIOR WINDOW INSTALLATION TAPE

- ✔ High performance airtight tape
- ✔ Split release backing



ALMA THERM

RECYCLED PANEL FOR STRUCTURAL INSULATION

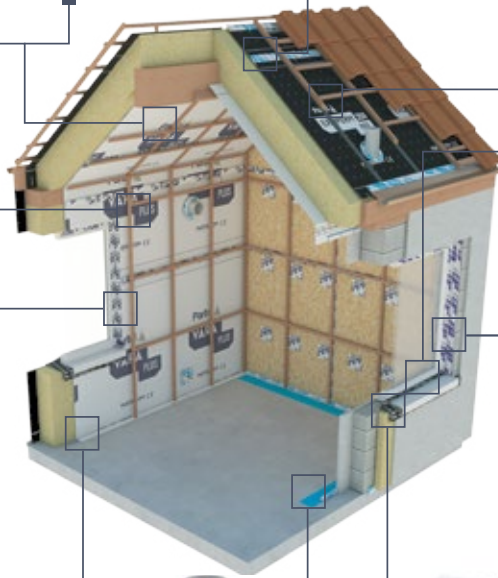
- ✔ Excellent thermal conductivity
- ✔ Highly efficient thermal break



CONPRESeal B61

JOINT SEALING TAPE

- ✔ Excellent sound and thermal insulation



ACRABOND LIQUID

MULTIPURPOSE AIRTIGHT ADHESIVE

- ✔ Solvent free
- ✔ Durable and flexible



ACRAPRIME LIQUID

PRIMER FOR POROUS SURFACES

- ✔ Quick drying
- ✔ Workable on cold surfaces



CONLEX BUTYL

FLEXIBLE BUTYL TAPE WITH HIGH TACK

- ✔ Easy to install
- ✔ Elastic and durable



VARASeal

INTERIOR AND EXTERIOR WINDOW TAPE

- ✔ Moisture variable
- ✔ Plasterable window



WWW.PARTEL.COM
SALES@PARTEL.COM
TEL: 888 487 1012



WWW.PARTEL.CO.UK
SALES@PARTEL.CO.UK
TEL: 02037 401918



WWW.PARTEL.IE
SALES@PARTEL.IE
TEL: 0818 33 33 55

PRODUCED BY:

PARTEL
CLAREGALWAY CORPORATE PARK,
CLAREGALWAY, CO. GALWAY,
IRELAND. H91 R85P
TEL: 0818 33 33 55



Partel

Save energy. Build smart.



FOLLOW US ON
TWITTER | FACEBOOK | INSTAGRAM | LINKEDIN