

Description

- Highly efficient decentralised (room-wise) ventilation unit with heat recovery based on the principle of reversing air flow (regenerator) with low power consumption and whisper quiet operation
- Installation in round duct with Ø 160 mm
- Contains a ceramic (heat) storage element, EPP foam housing, thermal insulation, G3 filter and ec-reversing motor
- Additional sound insulation and wind protection measures are optionally available

With general building authority approval according to DiBt Z-51.3-242

Order No. 039 993

Installation

The slide-in unit is inserted into the round duct 9/R 160 and with a slight gradient to the outside into the outer wall.

The devices are electrically connected in pairs.

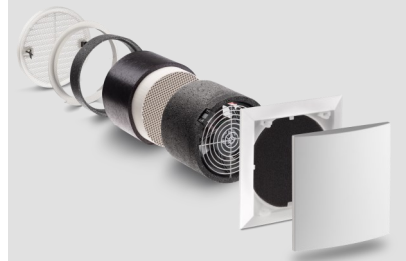
Please observe the installation manual and have the electrical connection of the fan performed by a qualified professional.

Technical data

Volume flow	4 - 11l/s	15 - 38 m ³ /h
Equivalent free area EN13141-1	4000mm ²	
Max. degree of heat supply	96 %	
Heat supply level according to EN 13141-8	85 %	
Sound pressure level at 1 m distance	21 - 41 dB(A)	
Sound pressure level at 3 m distance	12 - 32 dB(A)	
Measuring surface sound pressure level	16,5 dB(A)	
Max. standard sound level difference D _{n,e,w}	54 dB	
Sound power level L _w	29 - 49 dB(A)	
Power consumption	0,7 - 4 W	
Supply voltage	12 V DC SELV	
Core drilling	162 mm	
Minimum installation length	280 mm	
Dimensions	Pug-in module Ø 154 x 243 mm	
Compatibility	All 160 systems incl. LUNOtherm and external hoods as external finish	
Energy efficiency class	A	
Protection class	IP22	

Note

Products and illustrations may vary slightly. Due to continuous product development and/or several suppliers e.g. for raw materials, colours, among other things, may vary slightly (not for visible parts) or be shown differently in brochures.



The e² of LUNOS achieves Energy Efficiency Class A according to the Ecodesign Directive



E254 02.20