

Technical Data

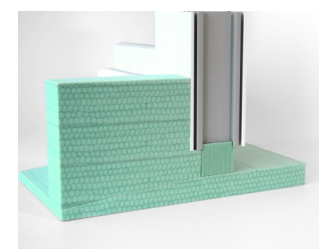
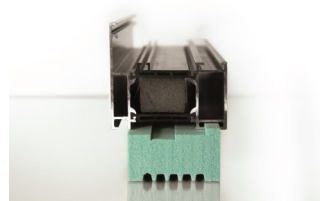
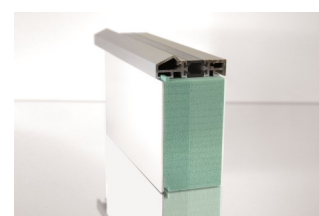
Properties	Panel Density				Unit	Standard
	115		180			
Compressive strength (perpendicular ¹⁾ / parallel ²⁾ to plane)	¹⁾ 1,5	²⁾ 0,8	¹⁾ 3,2	²⁾ 2,1	N/mm ²	EN 826
E-Modulus compression (perpendicular ¹⁾ / parallel ²⁾ to plane)	¹⁾ 67	²⁾ 45	¹⁾ 118	²⁾ 106	N/mm ²	EN 826
Bending strength (t=15 mm, welding lines lengthwise)	1,5		3,1		N/mm ²	EN310
Bending strength (t=15 mm, welding lines crosswise)	1,2		2,5		N/mm ²	EN310
Transverse tensile strength (perpendicular to plane)	1,9		3,0		N/mm ²	ASTM C297
Vicat softening temperature 1 (on the welding lines)	-		80		°C	EN ISO 306
Vicat softening temperature 2 (between the welding lines)	-		73		°C	EN ISO 306
Thermal conductivity	0,036		0,043		W/ (m . K)	EN 12667
Therm. Expansion coefficient - Thickness direction - Length / Width (range -20°C to + 60°C)	69,3		67,8		10 ⁻⁶ /K	DIN 53752
	74,6		69,3			
Water Vapour Diffusion (15 mm thickness)	16,8		38,3		s _d	EN 12086
Water Vapour Diffusion (50 mm thickness)	56,2		74,0		s _d	EN 12086
Resistance to axial withdrawal of screws ³⁾ - Screw-in depth 15 mm - Screw-in depth 20 mm - Screw-in depth 30 mm - Screw-in depth 40 mm	190		400		P	EN 320 (referring to)
	290		520			
	470		830			
	630		1080			
Building material class / Fire behavior	E		E		-	EN 13501
Absorption of water (after 7 days water storage)	Ca. 2,0		Ca. 2,0		Vol.-%	Internal
Swelling in thickness (after 7 days water storage)	< 0,5		< 0,5		%	Internal





Advantages

- √ Efficient thermal break
- √ Excellent mechanical strength
- √ High compressive strength
- √ Breathable material
- √ Permeable to water vapor diffusion
- √ Lower thermal conductivity
- √ Optimal insulation properties
- √ Lightweight and cost-effective composite structure



"The information provided is based on current knowledge and experience. This data sheet may become invalid and we reserve the right to make changes to designs and processes as we continually improve quality. Processing instructions including full system component details should be adhered to. Visit partel.com for the most up to date information"



www.partel.ie
sales@partel.ie
P: 0818 33 33 55



www.partel.co.uk
sales@partel.co.uk
P: 02037 401918



www.partel.com
sales@partel.com
P: 888 487 1012