

Flush-Mounted Housing 3/UP-A

Description

Housing for flush mounting made of UV-stable plastic, suitable for wall and ceiling installation with rear conical exhaust vent (DN 80 - DN 75) and leakage-airtight backdraft shutter.

The exhaust vent is top left, however, the housing can be turned at a right angle, so that the exhaust vent is either top right, bottom left or bottom right. The adjustment of the backdraft shutter to the appropriate installation position is done by simply changing its position.

All ventilator inserts of the Silvento series can be inserted into the flush-mounted housing.

Using an already pre-cut form, the 3/UP-A can be combined with the second-room connection 3/S2.

Incl. mounting accessories, sound absorbers and plaster protection cap for dirt protection.

Installation

The installation of the housing is made by flush finish on the wall or ceiling and ventilation using the Alu-Flex pipe DN 80 to the main line or directly through the outer wall.

Please observe the installation manual and have the electrical connection of the fan performed by a qualified professional.

Accessories

Wall duct 9/J 30 (ø 98mm)
 Second-room connection 3/S2
 Outer grille round
 white 1/WE 115
 red-brown 1/RE 115
 sanded 1/BE 115
 square sanded 1/J
 stainless steel 1/RME 150
 copper 1/RMK 150

Alu-Flex pipe DN 80

Technical data

Power supply 230 V AC 50 Hz
 Dimensions (W x H x D) in mm 262 x 262 x 90.6
 Available static pressure 227 Pa

The ventilation unit is provided with protective insulation; a protective conductor terminal is not required.

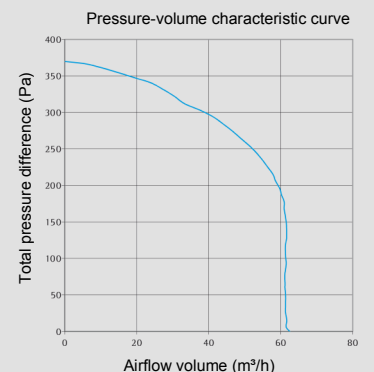
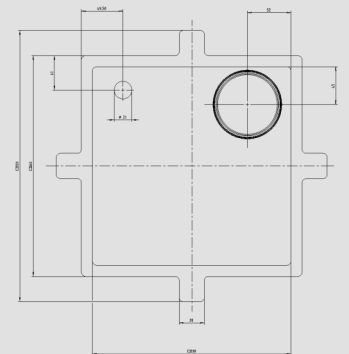
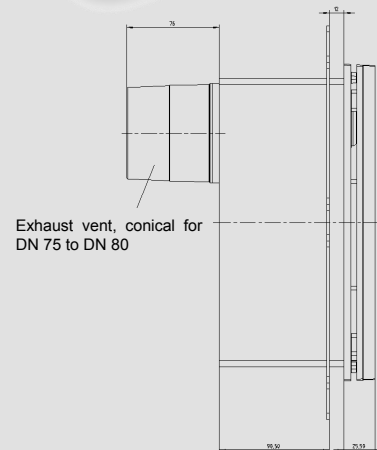
Further details

Product data
 Brand LUNOS
 Type 3/UP-A
 Order No. 039 136

Manufacturer's warranty: 2 years

Note

Products and illustrations may vary slightly. Due to continuous product development and/or several suppliers e.g. for raw materials, colours, among other things, may vary slightly or be shown differently in brochures.



E268 04.16 EN

Editing status: April 2016